

The Bridgewater II



{Elevation 2}



{Elevation 3}



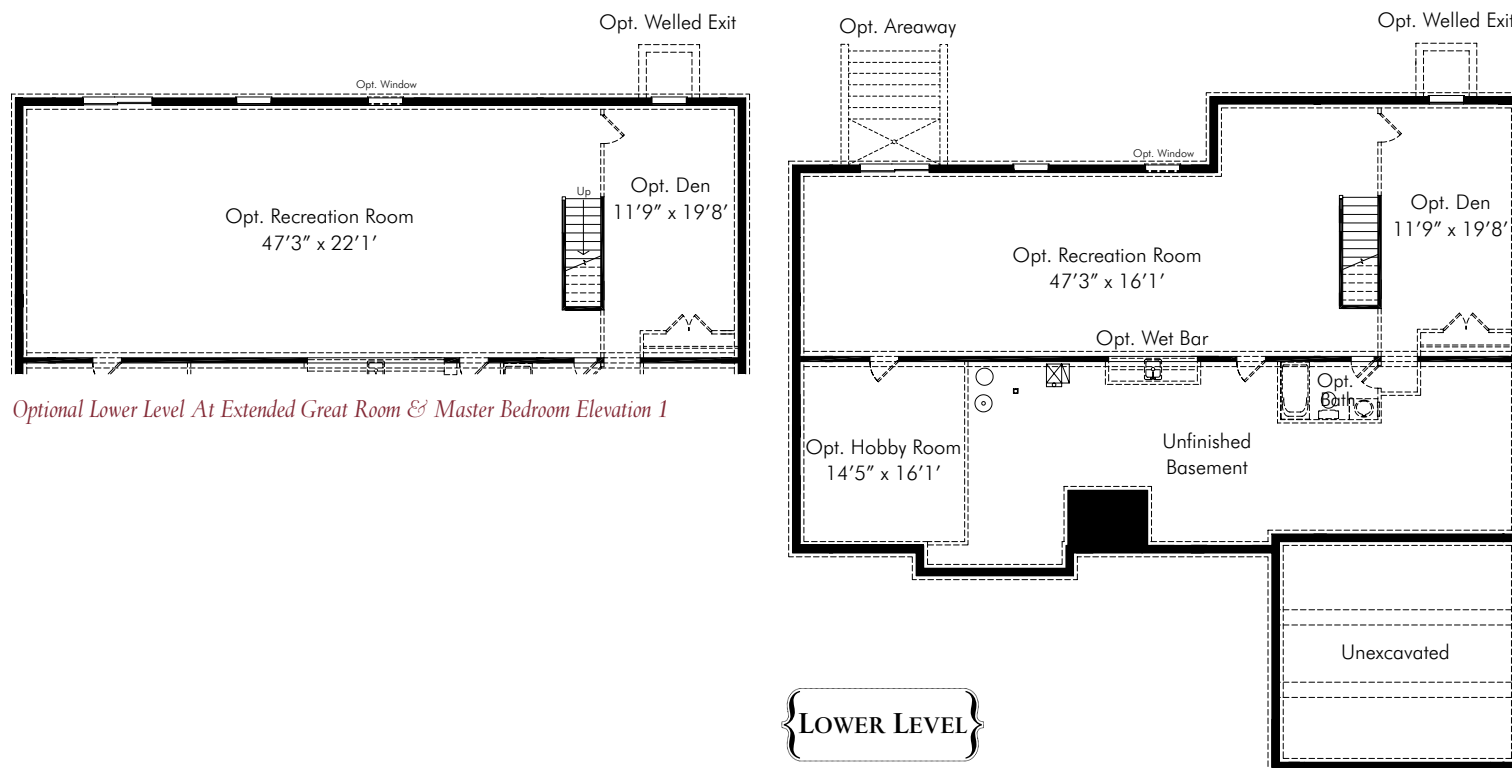
{Elevation 1}



{Elevation 4}



{Elevation 5}



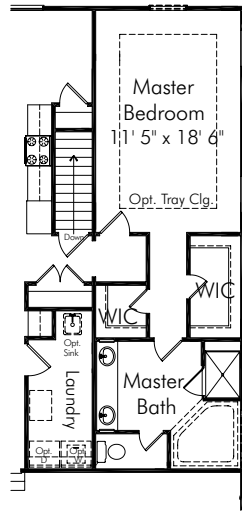
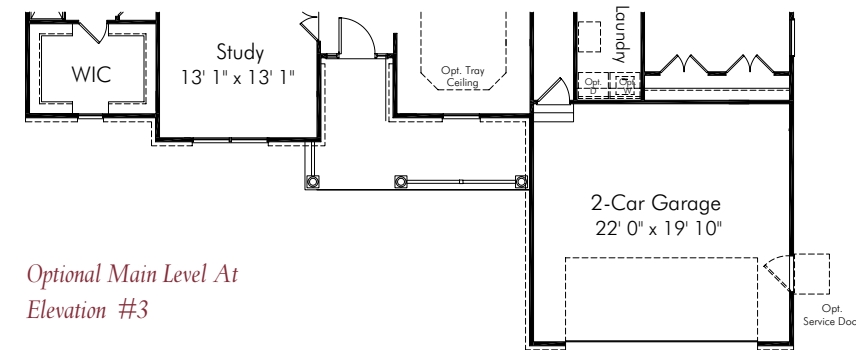
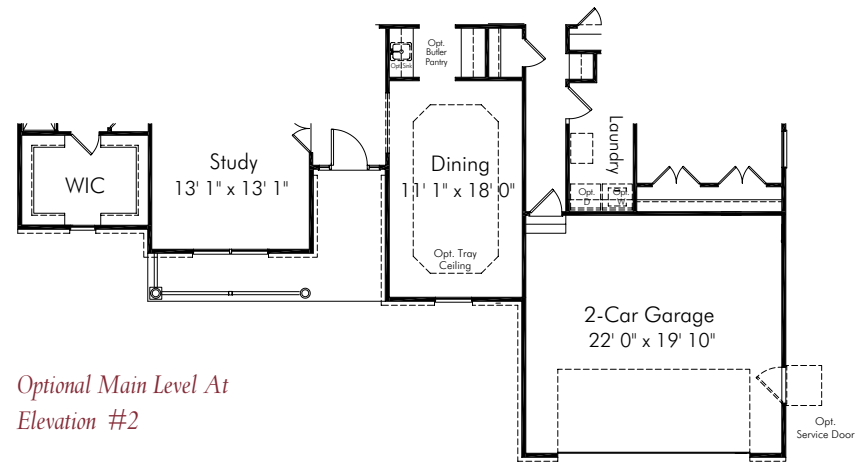
This spacious 3 bedroom 3 bath home offers main level living in an updated design. The light filled kitchen and breakfast nook join the great room in creating an open floor plan designed for family living or entertaining. The master suite features dual walk in closets and a luxury bath with dual vanities, over sized shower stall and space for an optional soaking tub. Bedrooms 2 and 3 shared a dual vanity bath with separate space for the tub/shower combo and water closet. Truly a flexible floor plan, there are options for a 4th bedroom with adjoining bath in lieu of the study, a second master bedroom suite and an extension to the master bedroom and great room. Options for a side load garage or 3 car garage are available as well as finishing options in the lower level for a rec room, den, hobby room and full bath. This home starts at 2300 square feet. Elevation Drawing may show Optional Features.

ATLANTIC BUILDERS
GIVING YOU MORE

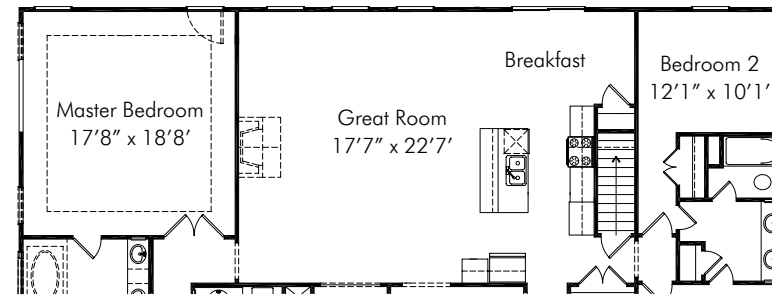


ATLANTIC BUILDERS
GIVING YOU MORE

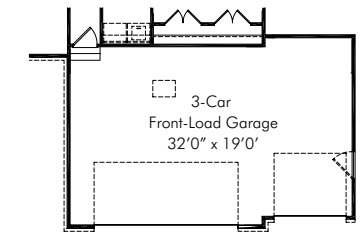
The Bridgewater II



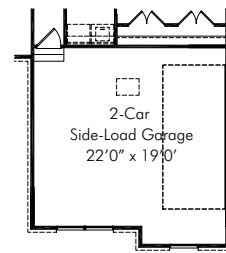
Optional Main Level At Dual Master Bedroom



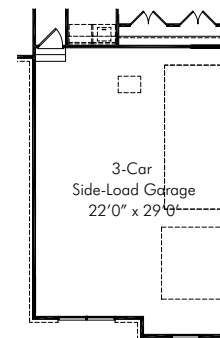
Optional Main Level At Optional Extended Great Room and Master Bedroom



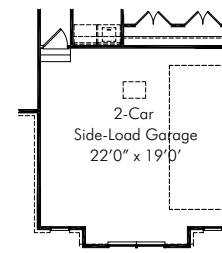
Optional Main Level At 3-Car Front-Load Garage



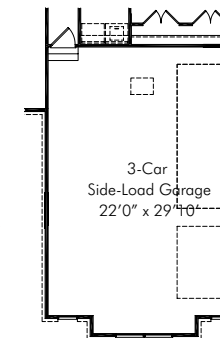
Optional Main Level At 2-Car Side-Load Garage At Elevation #1



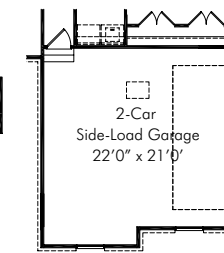
Optional Main Level At 3-Car Side-Load Garage At Elevation #1



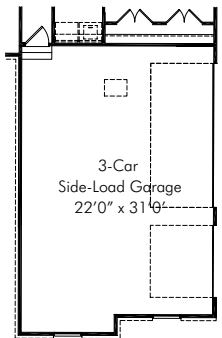
Optional Main Level At 2-Car Side-Load Garage At Elevation #2



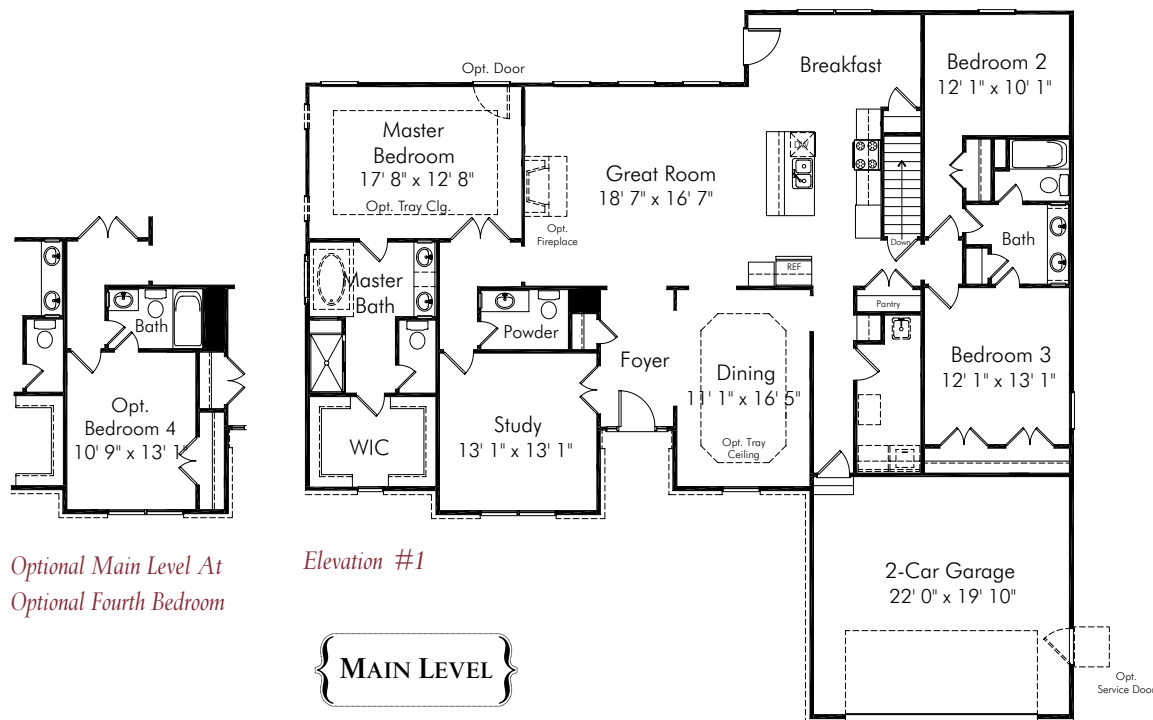
Optional Main Level At 3-Car Side-Load Garage At Elevation #2



Optional Main Level At 2-Car Side-Load Garage At Elevation #3

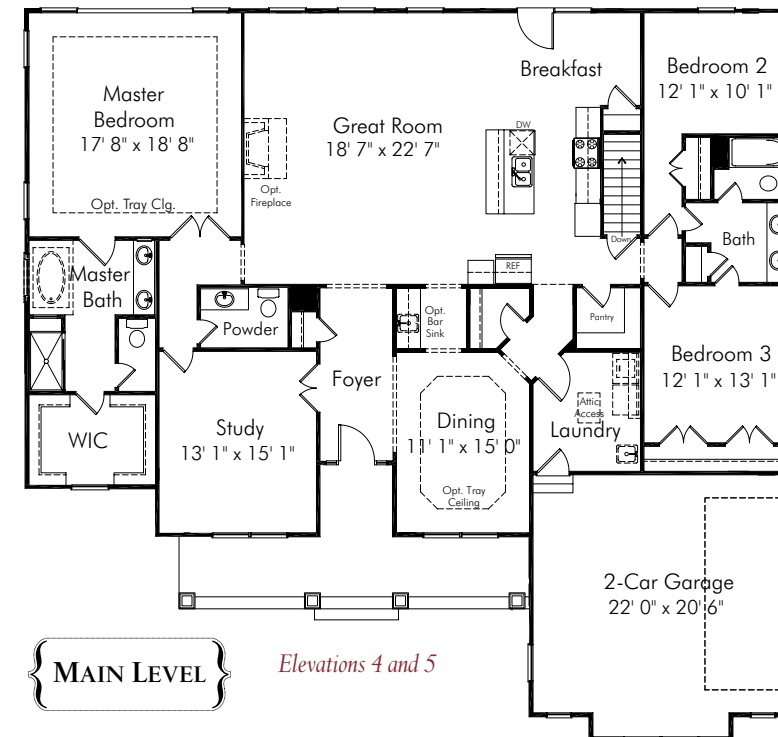


Optional Main Level At 3-Car Side-Load Garage At Elevation #3



Optional Main Level At Elevation #1

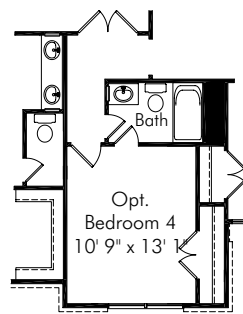
MAIN LEVEL



MAIN LEVEL

Elevations 4 and 5

Optional Main Level At Optional Fourth Bedroom



These renderings and floorplans are conceptual only. Actual details may vary. This insert is for illustrative purposes only. Atlantic Builders' continuing research and development program means specifications and plans are subject to change without notice. Standard features vary per community. Please consult Community Sales Manager for details.